

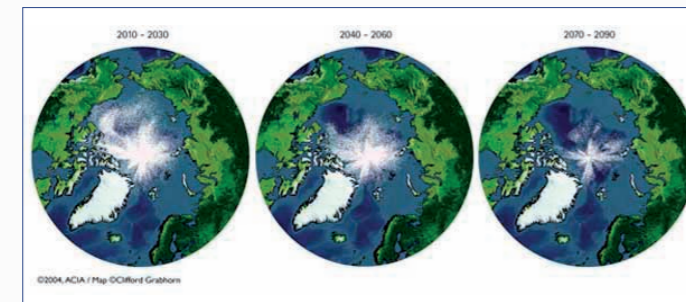
# DAMOCLES provides a substantial step forward from the present state-of-the-art

o **Improving** monitoring capabilities of the Arctic Ocean, Sea-Ice and Atmosphere through innovative technological advances.

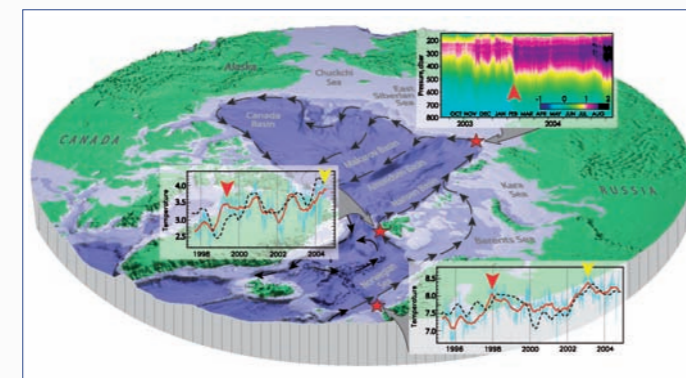
o **Increasing** the knowledge concerning dynamics and thermodynamics of Arctic Ocean Sea-Ice cover and the understanding of its interaction with the Ocean and the Atmosphere in the northern hemisphere climate system.

o **Improving** the data transfer from instruments to users, in near real time, the use of an operational databank and unprecedented data delivery and format agreements between all partners.

o **Numerical models** are simulation tools describing physical and geochemical processes in time and space. Time scales reach from hours (weather) to several decades (climate). To test and improve reliability of models, DAMOCLES observation systems are designed to fill critical gaps in the understanding of the Arctic system. Model-data comparison leads to improved realism in model simulations. These can then be used (1) to better understand processes, (2) to study the extent to which ocean-ice-atmosphere processes can be predicted, (3) to simulate future developments of Arctic climate and weather.



To further improve the representation of current and past physical fields, observational information is included into models by means of data assimilation techniques. The resulting best gridded representations of reality are used (a) to evaluate the quality of climate and weather forecast models (b) to improve the start fields for short-term weather and ocean forecasts, which will enhance the predictability of the Arctic (c) to support studies on processes related to the Arctic.



- Propagation of warm temperature anomalies into the Arctic Ocean from observations and modelling. Red and yellow arrows indicate two warm pulses of Atlantic Water, the path of which is shown by thin black arrows. Small panels show temperature observations (weekly averaged/blue lines, six-months running mean/red lines) from ocean moorings (red stars) compared with results from one of the DAMOCLES models (black dots). (Polyakov et al., One more step toward a warmer Arctic, GRL Vol 32, No 17, L17605, 16 September 2005. Copyright 2005 AGU).

o **Contributing** to the development and implementation of observing and forecasting systems to make long-term systematic observations of marine and atmospheric parameters of the Arctic Environment necessary for management strategies in the context of Global Change.

o **Improving** significantly the ability to predict extreme climate events in the Arctic, such as the disappearance of the perennial ice-cover and its consequences.

o **Improving** the knowledge of the adaptive capacity and vulnerability of human activities in the case of extreme climate events, thus enhancing the European Union's preparedness in terms of environmental and societal terms.

## The DAMOCLES consortium: 48 institutions in 11 EU countries + Russia and Belarus

- **Université Pierre et Marie Curie (UPMC)**  
4, place Jussieu - 75252 Paris - France  
Jean-Claude Gascard: gascard@lodyc.jussieu.fr
- **Alfred Wegener Institute for Polar and Marine Research (AWI)**  
PO Box: 120161 - Am Handelshafen 12 - 27515 Bremerhaven - Germany  
Ursula Schauer: uschauer@awi-bremerhaven.de
- **Swedish Meteorological and Hydrological Institute (SMHI)**  
Folkbrogsvägen 1 - 60176 Norrköping - Sweden  
Ralf Doscher: Ralf.doscher@smhi.se
- **Nansen Environmental and Remote Sensing Center (NERSC)**  
Thormøhlensgate 47 - 5006 Bergen - Norway  
Stein Sandven: stein.sandven@nersc.no
- **Finnish Institute of Marine Research (FIMR)**  
PO Box: 33 - Lyypekinkuja 3A - FIN-00931 Helsinki - Finland  
Berti Rudels: Bert.rudels@fimr.fi
- **Norwegian Meteorological Institute (met.no)**  
PO Box 43 Blindern - Niels Henrik Abels Vei 40 - 0313 Oslo - Norway  
Harald Schyberg - h.schyberg@met.no
- **Norwegian Polar Institute (NPI)**  
Hjalmar Johansens gate 14 - 9296 Tromsø - Norway  
Edmond Hansen: Edmond.hansen@npolar.no
- **Arctic Centre University of Lapland (UoL)**  
PO Box: 122 - Pohjoisranta 4 - 96101 Rovaniemi - Finland  
Monica Tennberg: Monica.tennberg@ulapland.fi
- **Göteborg University (UGOT) Department of Oceanography - Earth Sciences Centre**  
PO Box: 460 - SE-405 30 Göteborg - Sweden  
Goran Bjork: goran.bjork@scb.se
- **Institute of Marine Research (IMR)**  
PO Box: 1870 - Nordnesgt 50 - 5817 Bergen - Norway  
Harald Loeng: harald.loeng@imr.no
- **Centre for Environment, Fisheries & Aquaculture Science (CEFAS)**  
Pakefield Road - NR330HT Lowestoft - United Kingdom  
Stephen Dye: s.r.dye@cefas.co.uk
- **Danish Meteorological Institute (DMI)**  
Lyngbyvej - 2100 Copenhagen - Denmark  
Søren Andersen: san@dm.dk
- **University of Cambridge (UCAM-DAMTP)**  
The Old Schools, Trinity Lane - CB2 1TS Cambridge - United Kingdom  
Peter Wadhams: p.wadhams@damp.cam.ac.uk
- **University of Bremen (UB)**  
PO Box: 330440 - Bibliothekstrasse - D-28334 Bremen - Germany  
Georg Heygster: heygster@univ-bremen.de
- **University College London (UCL) Centre for Mathematical Sciences**  
Wilberforce Road - Cambridge CB3 0WA - United Kingdom  
Seymour Laxon: swl@cpom.ucl.ac.uk
- **Stockholm University (SU)**  
Department of Meteorology - SE 106 91 Stockholm - Sweden  
Michael Tjernström: michael@misu.su.se
- **University of Bergen (UiB)**  
PO Box: 7800 - N5020 Bergen - Norway  
Peter Haugan: Peter.haugan@gf.uib.no
- **Foundation for Research and Technology - Hellas (FORTH)**  
PO Box: 1385 - GR 711 10 - Heraklion - Crete - Greece  
Emmanuel Skarsoylis: eskars@iacm.forth.gr
- **University of Hamburg (UNIHAM)**  
Meteorological Institute - Bundesstr. 55 - D-20146 Hamburg - Germany  
Burghard Brummer - brummer@dkz.de
- **Instytut Oceanologii, Polska academia Nauk (IOPAN)**  
PO Box: 148 - Powstancow Warszawy 55 - 81 712 Sopot - Poland  
Jan Piechura: piechura@iopan.gda.pl
- **Optimare Sensorsysteme AG (OPTIMARE)**  
Am Luneort 15a - 27572 Bremerhaven - Germany  
Harald Rohr: hrohr@optimare.de
- **Finnish Meteorological Institute (FMI)**  
PO Box: 503 - Vuonikatu - 00101 Helsinki - Finland  
Vihma Timo: timo.vihma@fmi.fi
- **The University Centre in Svalbard (UNIS)**  
PO Box: 156 - 9171 Longyearbyen - Norway  
Frank Nilsen: Frank.Nilsen@unis.no
- **Institut Français de Recherche pour l'Exploitation de la Mer (IFREMER)**  
BP Box: 70 - 29280 Plouzané - France  
Robert Ezraty: Robert.Ezraty@ifremer.fr
- **Centre National de la Recherche Scientifique (CNRS)**  
PO Box: 16, avenue des martyrs - 38042 Grenoble - France  
Jérôme Weiss: weiss@lggcy.observatoire-jff-grenoble.fr
- **Université de Savoie (UdS)**  
PO Box: 1104 - 27, rue Marcoz - 73011 Chambéry - France  
David Marsan: David.Marsan@univ-savoie.fr
- **Institut Polaire Français - Paul Emile Victor (IPEV)**  
PO Box: 75, Technopole Brest-Iroise - 29280 Plouzané - France  
Alain Desautez: alain.desautez@ipev.fr
- **Technical University of Denmark (DTU)**  
Oerstedts Plads 348 - DK-2800 Lyngby - Denmark  
Leif Toudal: ltp@oersted.dtu.dk
- **Danish National Space Center (DNSS)**  
Juliane Maries Vej 30 - DK-2100 Copenhagen - Denmark  
Rene Forsberg: rf@spacecenter.dk
- **State Research Center Arctic and Antarctic Research Institute (SRC-AARI)**  
Bering st 38 - 199397 Saint-Peterburg - Russian Federation  
Sergey Priamnikov: priamniks@aari.nw.ru
- **Tartu Ülikool (UT)**  
Ülikooli 18 - 50090 Tartu - Estonia  
Jaak Jaagus: jaak.jaagus@ut.ee
- **PP Shirshov Institute of Oceanology, Russian Academy of Science (SIO)**  
Nakhimovsky prospect 36 - 117851 Moscow - Russian Federation  
Sergey Pisarev: pisarev@ocean.ru
- **University of Reading (UREADES)**  
PO Box: 217, Whiteknights house, Whiteknights - RG6 6AH Reading - United Kingdom  
Keith Haines: kh@mail.nerc-essc.ac.uk
- **École Nationale Supérieure d'Ingénieurs des Études et Techniques d'Armement (ENSIETA)**  
2, rue François Verny - 29806 Brest - France  
Nicolas Seube: seube@ensieta.fr
- **Scottish Association for Marine Science (SAMS)**  
Dunstaffnage Marine Laboratory - PA37 1QA Oban - United Kingdom  
Jeremy Wilkinson: Jeremy.Wilkinson@sams.ac.uk
- **O.A.Sys - Ocean Atmosphere Systems (OASys)**  
Schanzenst. 36 - 20357 Hamburg - Germany  
Frank Kauker: frank@oasys-research.de
- **International Polar Foundation (IPF)**  
Rue des deux gares - 1070 Brussels - Belgium  
Alain Hubert: info@polarfoundation.org
- **Center for International Climate and Environmental Research (CICERO)**  
PO Box: 1129 Blindern - Sognsveien 68 - 0318 Oslo - Norway  
Grete K. Hovelsrud: ghb@cicero.uio.no
- **Martec Serpe IESM (MSI)**  
ZI des 5 chemins - 56520 Guidel - France  
Patrice Brault: Patrice.brault@martec.fr
- **FastOpt (FastOpt)**  
Schanzenstrasse 36 - 20357 Hamburg - Germany  
Thomas Kaminski: thomas.kaminski@FastOpt.com
- **Naxys AS (NAXYS)**  
Hegrenesveien 42 - 5042 Bergen - Norway  
Jens Abrahamson: jab@naxys.no
- **Helsinki University of Technology (HUT)**  
PO BOX: 1000 - Otakaari 1 - 02015 HUT Espoo - Finland  
Mika Vainio: Mika.Vainio@hut.fi
- **Aanderaa Data Instruments AS (AANDERAA)**  
PO Box 34, Slatthaug - 5851 Bergen - Norway  
Kristin Guldbrandsen Frøysa - kristin.froysa@aadi.no
- **Aquatec Telemetry Limited (ATL)**  
High Street - Hartley Wintney - RG27 8NY - United Kingdom  
Andrew Smerdon: asmerdon@AquatecGroup.com
- **B.I. Stepanov Institute Of Physics - National Academy of Sciences of Belarus (IP NASB)**  
Nezavisimosty Ave. 68 - 220072 Minsk - Belarus  
Eleonora Zege: eleonora@zege.bas-net.by
- **Institute of Numerical Mathematics - Russian Academy of Sciences (INM RAS)**  
GSP-1, Gubkina str, 8 - 119991 Moscow - Russia  
Nikolay Yakovlev: iakovlev@inm.ras.ru
- **Nansen International Environmental & Remote Sensing Center (NIERSC) - Climate Group**  
Vasilevsky Island, 14 Line, 7, of 49 - 199 034 Saint Petersburg  
Elena Shalina: elena.shalina@niersc.spb.ru
- **Scientific and Technological Center for Earth Space Monitoring (STC ESM)**  
51, building 25, Dekabristov str. - 127490 Moscow  
Larisa Permittina: permitina@ntsomz.ru

European Commission - CDMA 03/116 - B - 1049 Brussels - Belgium - Damien Cardinal: damien.cardinal@ec.europa.eu  
The Damocles project is financed by the European Union in the 6th - Framework Programme for Research and Development

International cooperation with USA, Canada and Asia in the context of the International Polar Year (IPY 2007-2008)



## Developing Arctic Modelling and Observing Capabilities for Long-term Environmental Studies

### The European Integrated Project

# DAMOCLES

2005 - 2009



A European contribution to the International Polar Year



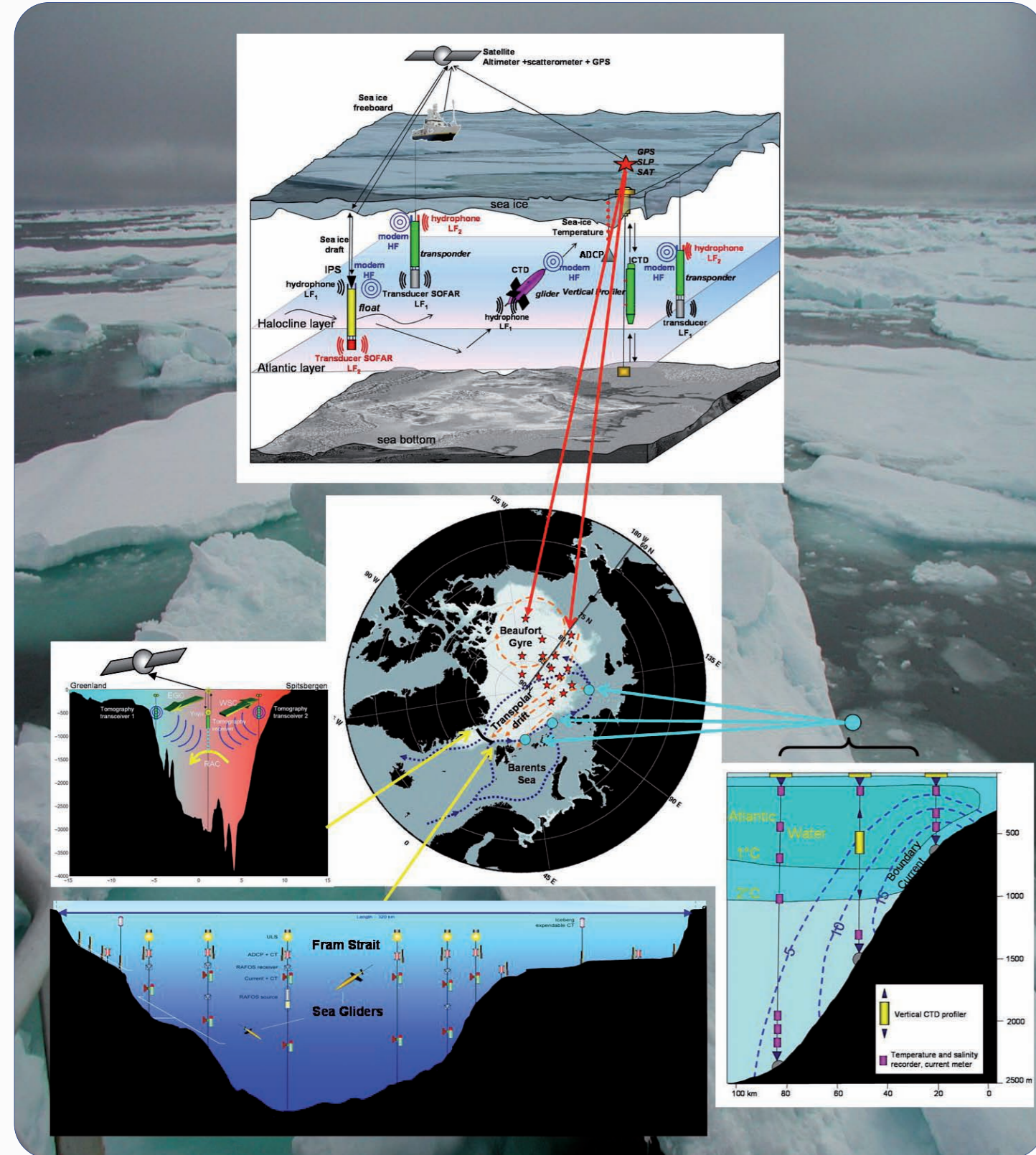
SIXTH FRAMEWORK PROGRAMME



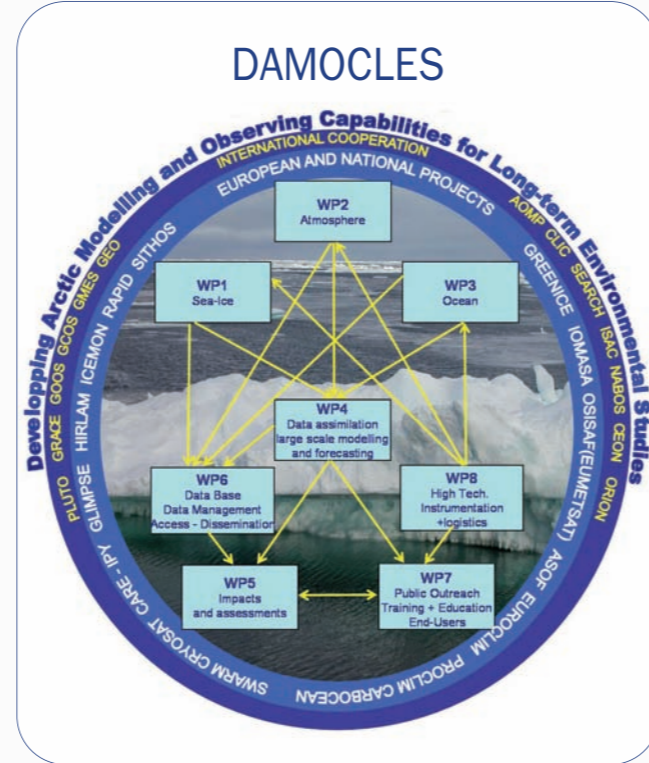
# The DAMOCLES Integrated Project

o Is an integrated ice-atmosphere-ocean monitoring and forecasting system designed for observing, understanding and quantifying climate changes in the Arctic. An advanced observing system will be developed and deployed, providing for the first time, synoptic, continuous and long-term monitoring of the lower atmosphere, sea-ice and upper ocean. It is designed to evaluate and improve global and

regional climate forecasting models based on validation, assimilation and integration of observed data. The ultimate goal will be to lengthen the lead-time of extreme climate changes predicted to occur in the Arctic within this century according to the Arctic Climate Impact Assessment (ACIA) and thus to improve the ability of society to mitigate for its impacts.



# DAMOCLES Main Objectives



o **Synoptic observations of the Arctic Ocean Sea-Ice Pack.**

The variability of sea-ice thickness, extent, concentration, ice-type and drift are monitored by remote and in-situ systems in near real-time. Sea-ice dynamics and thermodynamics are scrutinised to better understand their role for the large-scale ice-atmosphere-ocean system.

o **Synoptic observations of atmospheric key processes occurring in the Arctic Ocean.**

Aimed at better predictability of the Arctic weather and climate, key processes are investigated in a combined observational/process/modelling effort. The effects of Arctic Cyclones (Polar Lows) on Sea-Ice in terms of heat and moisture transport, an improvement of boundary-layer physics over ice and ocean, an improvement of the radiative transfers and their interactions with snow, sea-ice and ocean.

o **Synoptic observations of the Arctic Ocean circulation and key processes.**

An observational system is set up with the aim to improve the understanding of the large-scale circulation of the Arctic Ocean and its vertical and lateral exchanges as well as the communication between central basins and the shelves. New techniques are used to assess synoptically the state of the ocean under the ice and the fluxes of heat, salt and volume across the boundaries.

o **Integration and assimilation of observations with large-scale models.**

Model sensitivities is investigated and performance improved by model-model and model-data intercomparisons, aiming at an improved predictability. Observations are enhanced by a set of assimilation activities to deliver re-analysed Arctic Climate variables in time and space.

**Potential impacts of climate changes in the Arctic are addressed by the following specific objectives:**

o **Assessment of impact on environment and humans.** The observationally supported model improvements, the model sensitivities and past ranges of variability are combined with new field data. The aim is to evaluate improved predictability and its consequences, as well as the impact of projected changes on adaptation capabilities and vulnerability of the environment and human activities. Exploitation and dissemination of the results are key elements of DAMOCLES.



o **User-friendly return of information to the community.**

A website is available, giving the community updated information about the state of the Arctic (e.g. real-time information of key atmospheric, ice and ocean variables) as well as information about the progress of the science of DAMOCLES. Education is provided through workshops and student scholarships. Results are published both in scientific journals and in the popular-scientific press. The scientists make generally themselves available to the public to the best of their knowledge.



**Crédits photos:** Jacky Lanoisellé - Michael Klages - Eric Brossier - Francis Latreille/ADO - G. Redvers/taraexpeditions.org - State Research Center Arctic and Antarctic Research Institute - Murmansk Shipping Company - Norwegian Polar Institute - Alfred Wegener Institute.